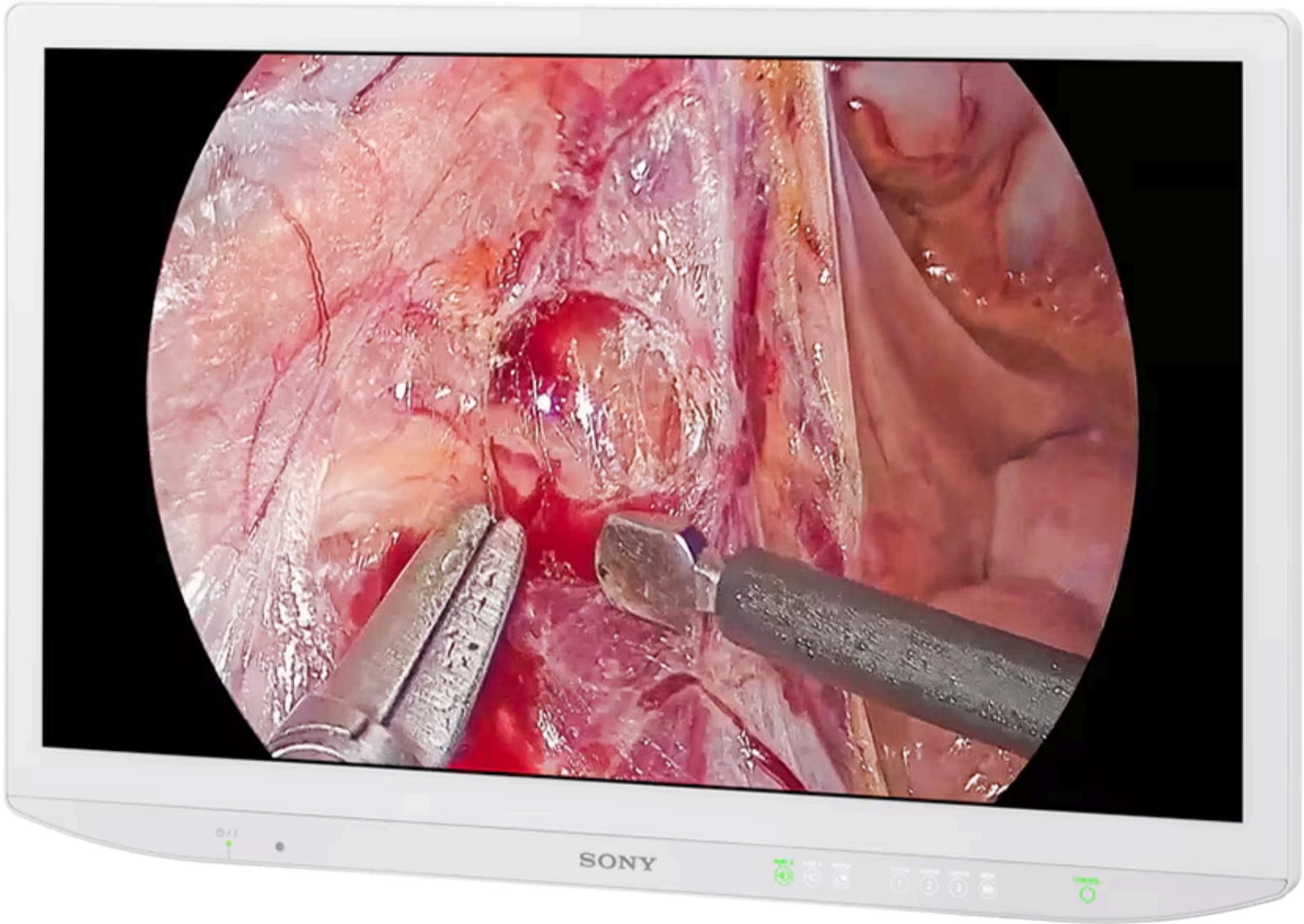


LMD-32M1MD

Where to buy

Overview [Features](#) Specifications Accessories Resources



LMD-32M1MD

31.5-inch 4K 2D Mini LED surgical monitor featuring Sony's Advanced Local Dimming Technology (Backlight Master Drive)

31.5-inch : 800.0mm viewable area, measurement diagonally

[Screen images on this page are simulated for illustrative purposes.]



Backlight Master Drive

LMD-32M1MD

Where to buy

- Overview
- [Features](#)
- Specifications
- Accessories
- Resources



LMD-32M1MD Surgical Monitors | Medical | Sony Official



New Standard of Brightness and Contrast

The LMD-32M1MD is the first surgical monitor worldwide to achieve VESA [DisplayHDR](#) 1000 certification (as of January 2025). Its extremely high peak luminance of 1850 cd/m² and contrast ratio of 1,000,000:1 are achieved by Sony’s advanced Local Dimming Technology (Backlight Master Drive), providing exceptional visual clarity that’s essential for minimal invasive surgery. The unique Anti-Reflection Technology combines Low-Reflection and Anti-Glare surface treatment to minimise on-screen reflections in brightly-lit Operating Rooms.



On demand Webinar: LMD-32M1MD Future of Surgical Imaging has arrived

In this exclusive on demand Webinar, Sony’s global experts unveils the story behind this advanced monitor, its groundbreaking technologies, and its role in shaping the future of surgical imaging.

[Watch now >](#)

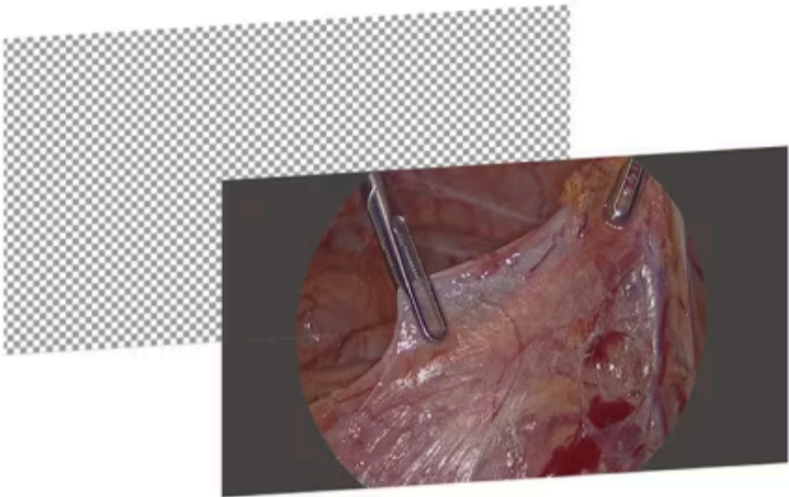
LMD-32M1MD

Where to buy

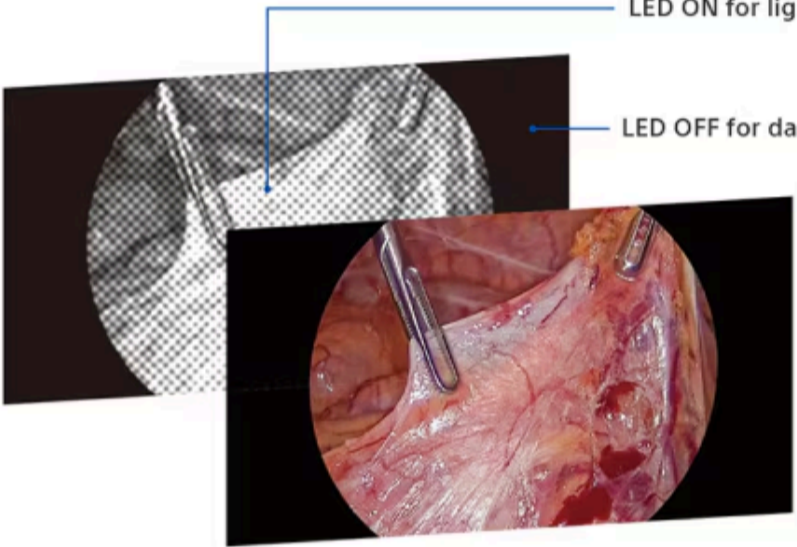
Overview [Features](#) Specifications Accessories Resources



Local Dimming OFF
All LED ON



Local Dimming ON
LED ON for light zones
LED OFF for dark zones



Experience Exceptional Clarity and Visual Detail

Sony’s advanced Local Dimming Technology (Backlight Master Drive) precisely controls the panel backlight’s dense array of mini LEDs to ensure stunning brightness and high contrast. LED backlighting sources are independently controlled in light and dark zones of the image. This significantly improves black reproduction by turning off LEDs, simultaneously using saved energy to boost peak brightness in highlight areas. This allows the LMD-32M1MD to achieve a peak brightness exceeding 1,850 cd/m², and a contrast ratio of 1,000,000:1.

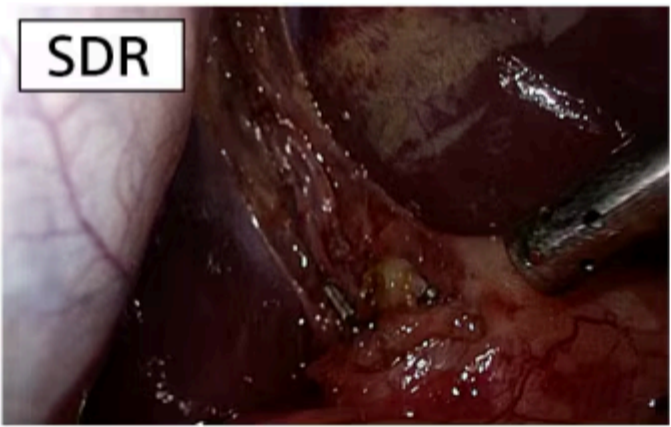
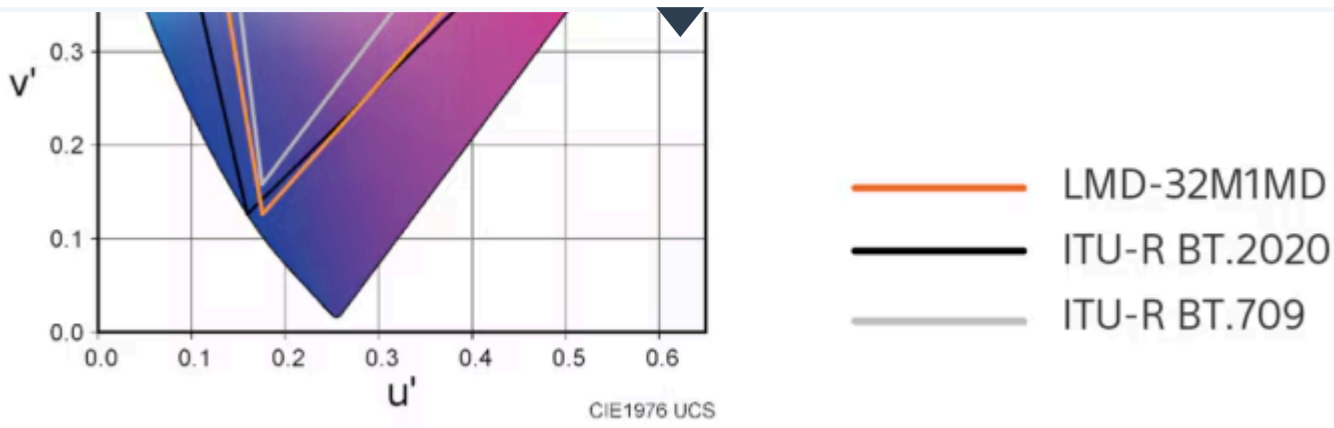
Wide Colour Gamut for Realistic Visualisation

The LCD and signal processing technology employed in the LMD-32M1MD achieves a wide colour gamut conforming to ITU-R recommendation BT.2020. This allows for superior colour reproduction to achieve more realistic visualization of surgical images.

LMD-32M1MD

Where to buy

Overview [Features](#) Specifications Accessories Resources



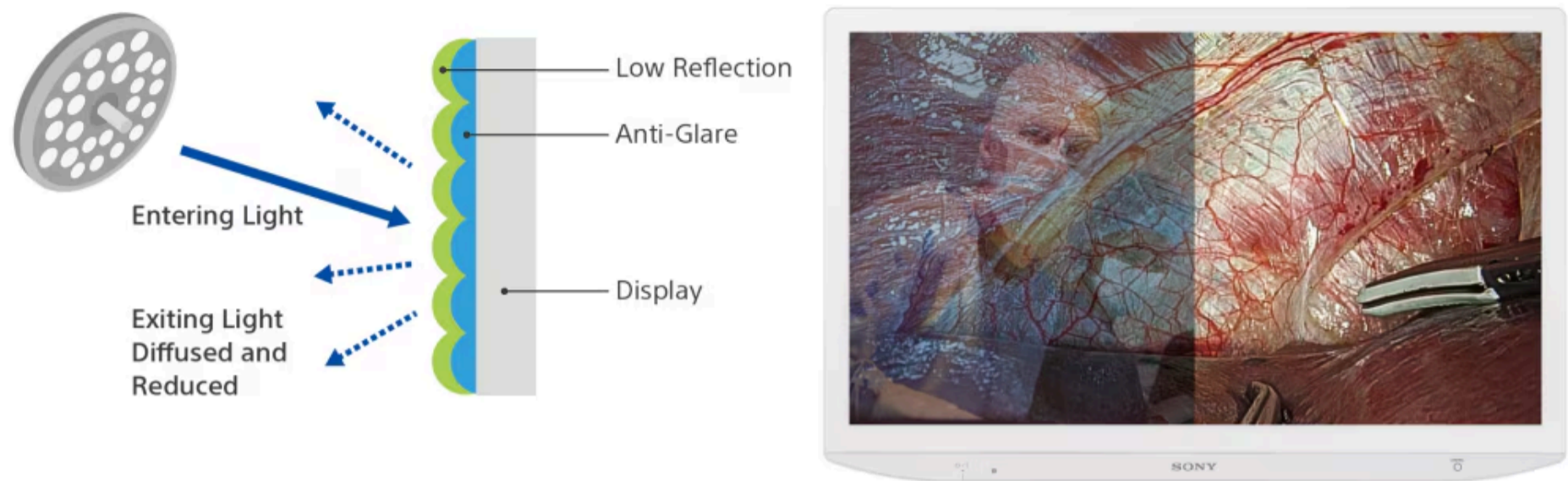
Clarity in Light and Dark Areas

HDR technology offers surgeons a clearer view by visualising a wider range of brightness levels within the same scene, minimising the loss of fine detail in shadowed areas and overexposed highlights. The LMD-32M1MD can reproduce greater details enhanced by HDR when receiving and selecting HLG (Hybrid Log-Gamma) or PQ (Perceptual Quantization) signals.

LMD-32M1MD

Where to buy

Overview [Features](#) Specifications Accessories Resources



Minimised Screen Reflection in Brightly-lit Operating Rooms

Sony’s unique Anti-Reflection Technology featured in the LMD-32M1MD combines two reflection suppression technologies. Low Reflection reduces the amount of reflected light and minimises reflection from external light sources. This is reduced further by an Anti-Glare surface treatment that diffuses incoming light. By creating a slightly rough surface on the display, this Anti-Glare surface maximises the diffusion of incoming light and minimises reflections. By combining these advanced surface treatment technologies, the LMD-32M1MD achieves a balance of diffusing incoming light, reducing reflections and minimising glare – ensuring extremely high contrast images with lifelike colour reproduction.

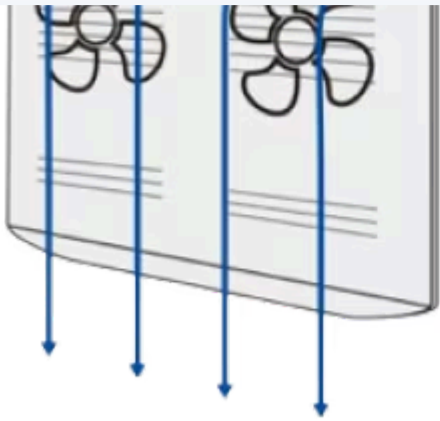
Fanless Design Minimises Airflow Disruption

The LMD-32M1MD features a fanless cooling system that significantly minimises unwanted interference with ventilation airflow around the monitor.

LMD-32M1MD

Where to buy

Overview [Features](#) Specifications Accessories Resources



Conventional monitor with cooling fan inside



LMD-32M1MD with fanless design less affect to airflow



Intuitive Navigation and Custom Buttons

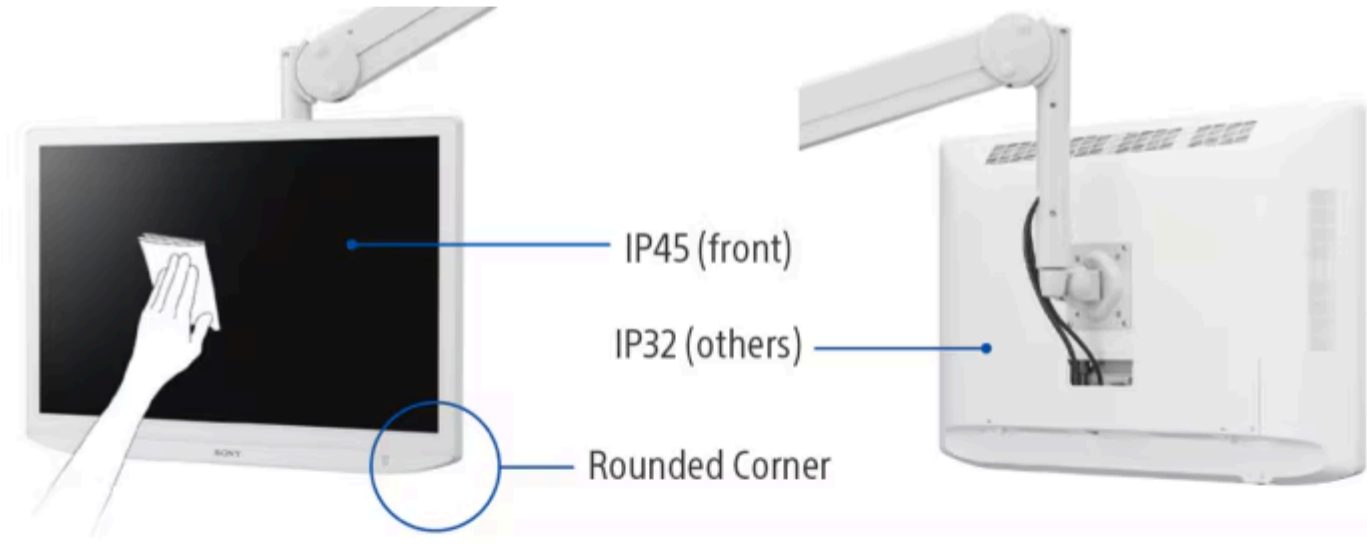
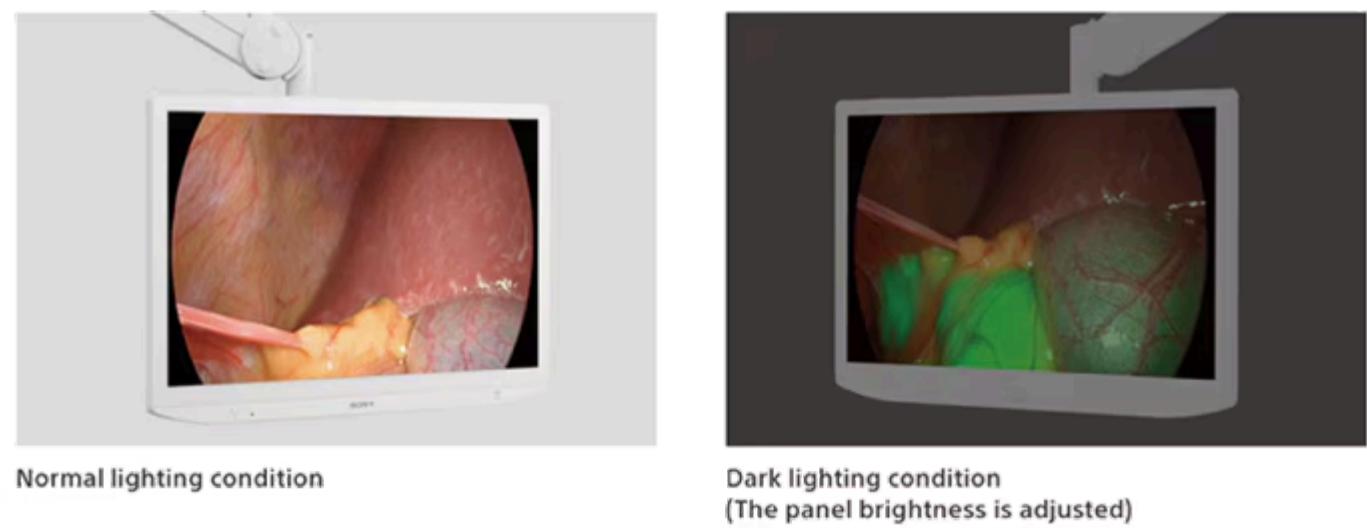
The monitor’s LED backlighting selectively illuminates active control buttons on the front panel, offering clear guidance to clinical staff even in dark environments. In addition frequently used functions can be assigned to three custom buttons on the front panel, allowing quick access and supporting enhanced workflow efficiency.

LMD-32M1MD

Where to buy

Overview [Features](#) Specifications Accessories Resources

lighting conditions in the Operating Room. This ensures visibility even in cases during procedures like ICG navigation surgery, where darker room lighting is required.



LMD-32M1MD

Where to buy

Overview [Features](#) Specifications Accessories Resources

Installation-Friendly Cabling

Two cable access points with integral covers broaden installation options with easy cable management. AC power and HDMI cable holders ensure placement of cables, helping to prevent accidental disconnections.



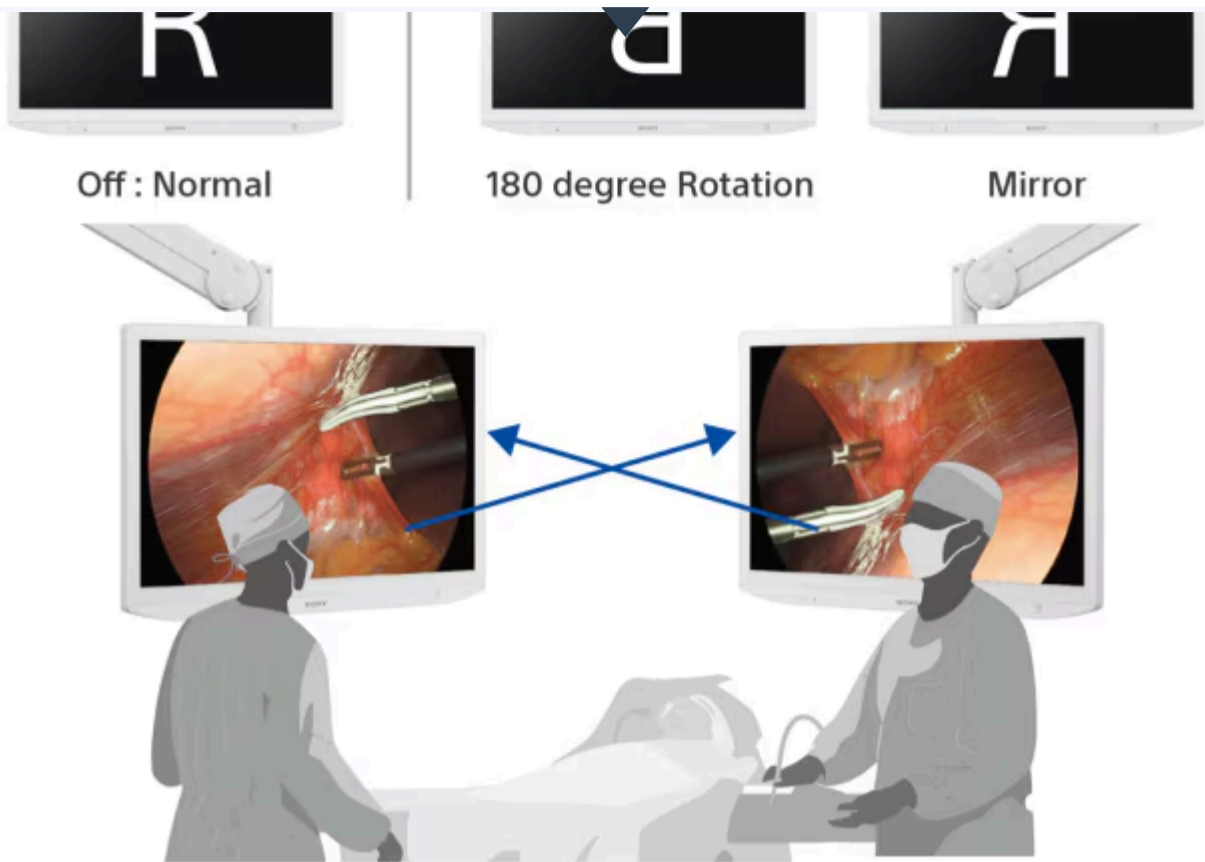
Versatile Connectivity Options

The LMD-32M1MD offers a comprehensive array of input/output connectors, including 12G-SDI, HDMI and Display Port. A USB 5V/1.5A (Type C) port provides power to connected external equipment. There’s also a USB (Type A) port that can be used to export/import monitor setting information from one monitor to another via the USB device.

LMD-32M1MD

Where to buy

Overview [Features](#) Specifications Accessories Resources



Optimal Viewing Angles

The displayed image can be rotated 180 degrees or flipped horizontally. This ensures optimal viewing for surgeons and clinical teams in the OR, regardless of the orientation of a connected endoscopic camera.

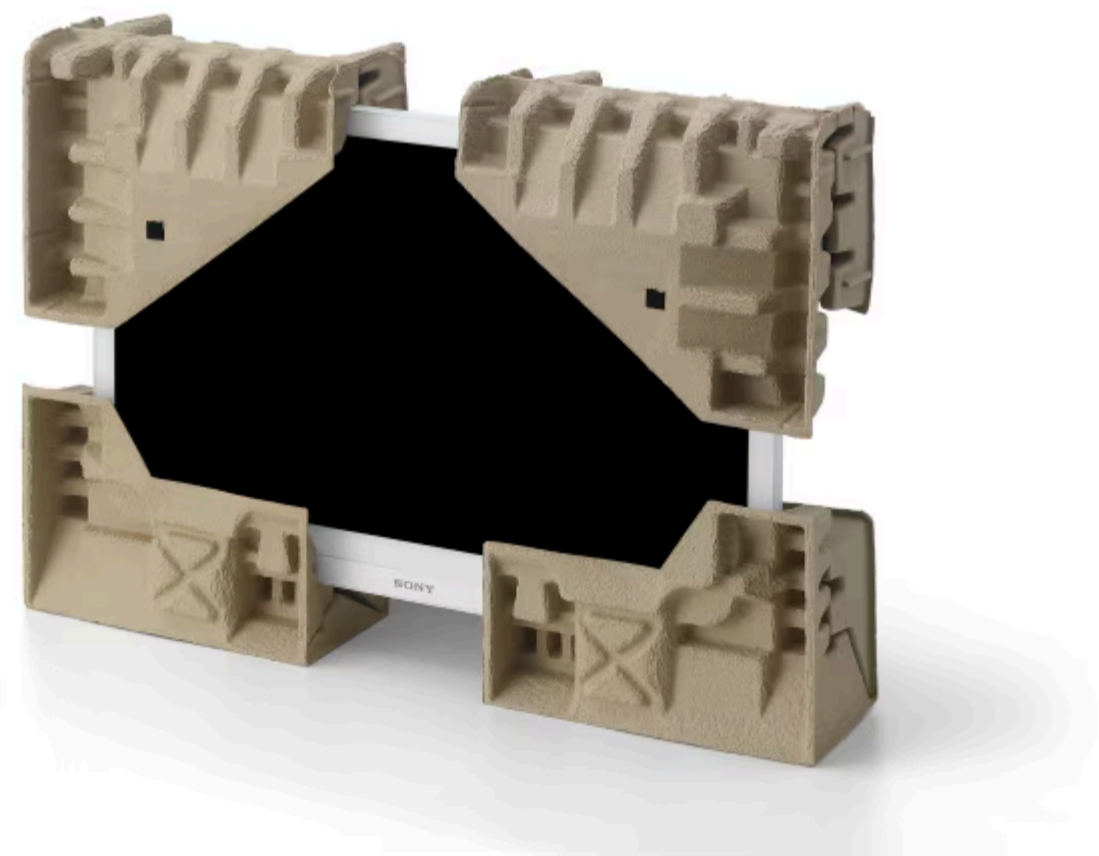
Simplified Configuration of Multiple Monitors

The USB (Type A) port allows for monitor configuration settings to be stored to an attached USB device. This stored setting information can then be easily applied to other monitors via the USB device.

LMD-32M1MD

Where to buy

Overview [Features](#) Specifications Accessories Resources



Environmentally Conscious Efforts

Reduce Plastic Packaging to -86%

The packaging for the LMD-32M1MD eliminates expanded polystyrene form, relacing it with molded pulp materials. The monitor is also supplied in a covered non-woven bag made mainly from plant cellulose. This reduces the amount of virgin plastic used for packaging by approximately 86% (compared with LMD-X3200MD, introduced in 2020).

LMD-32M1MD

Where to buy

Overview [Features](#) Specifications Accessories Resources

The LMD-32M1MD is equipped with the Sleep & Wake function that consumes less power energy. When the monitor is not used, the monitor enters into Power Saving mode by turning off the backlight if there is no input signal from the selected connector for more than 1 minute.



7-day repair service

Register your new medical display with PrimeSupport and get a free upgrade to Elite cover that includes our fast-track 7-day repair service to keep you up and running.

[Find out more >](#)

Gallery

LMD-32M1MD

Where to buy

- Overview
- Features
- Specifications
- Accessories
- Resources



Specifications

Expand all

▼

Collapse all

▲

Picture Performance	▼
Input	▼
Output	▼
Input/Output	▼
General	▼
Supplied Accessories	▼

Accessories

LMD-32M1MD

Where to buy

- Overview
- Features
- Specifications
- Accessories
- Resources

AC-300MD

[Provides power for Sony LCD medical monitors](#)



SU-600MD

[Stand specifically designed for use with Sony LCD flat panel medical monitors](#)

NUA-BK30

[IP Converter Bracket for NU-IP3R](#)

Related products



LMD-XH550MT

[55-inch 4K 3D/2D LCD medical monitor](#)



LMD-XH320MT

[32-inch 4K 3D/2D LCD medical monitor](#)



LMD-XH550MD

[55-inch 4K 2D surgical monitor](#)



LMD-32M1MD

Where to buy

- Overview
- Features
- Specifications
- Accessories
- Resources



Support

Manuals

Questions & Answers

Change Country, Region or Language

Discover

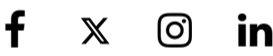
- Technology
- Events
- Case Studies
- Press Centre

Login/Register

- Channel Partners
- Alliances

Get In Touch

- Contact us
- Press Contacts



About us | Modern Slavery Act | Privacy | Website Accessibility | Site Map | © 2004 - 2025 Sony Europe B.V. - Terms and Conditions of Website Use